



2023 ANNUAL REPORT



MOUNT ST. HELENS
INSTITUTE



A year of renewal and growth.



2023 was a year of surprises and growth for the Mount St. Helens Institute. I am grateful for the resilience and dedication of our community, the growth we experienced, and the opportunities that lay ahead.

In 2023, we inspired record numbers of young people to dive into STEM subjects, offered hands-on and field-based learning experiences, and brought thousands of individuals closer to the awe-inspiring beauty of Mount St. Helens.

We also celebrated some major milestones: the completion of the concept designs for phases 1 and 2 of the Coldwater project, our largest ever education team (including a full-time cook to support our programs!), and starting to see the statewide impact of the 2022 HB 2078 passage, which provides funding for outdoor school programs

There were some bumps in the road (literally and figuratively), including landslides around the Monument that made Windy Ridge access difficult and Johnston Ridge Observatory

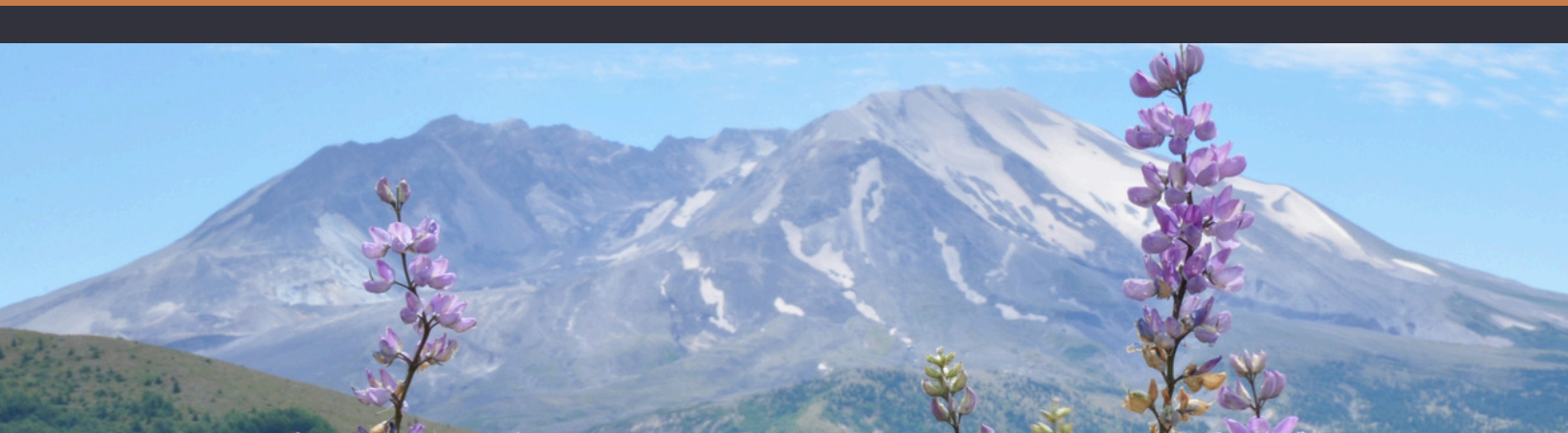
inaccessible. Though challenging, the slides were a reminder of the dynamic landscape that surrounds us and an opportunity to deepen our partnership with the USFS as we share programming space at the SLC.

We continue to make progress on our capital project at Coldwater, working toward increasing education, access, and economic development in the region.

Thank you to all of our staff, volunteers, donors, and community members for supporting what we do and making incredible things like this possible. We're excited to introduce new and returning visitors to the majesty of Mt. St. Helens for more years to come.



Alyssa Hoyt
Acting Executive Director
Mount St. Helens Institute



VOLUNTEER IMPACT

203

Volunteers

6,603

Miles Hiked

72,102

People Engaged

EDUCATION IMPACT

1,815

Youths Engaged

75%

were from a group that
received financial assistance

GUIDED ADVENTURES

517

Adventures

3,969

Person-miles Hiked



“

The most important thing I learned is, "Sometimes, the path to a dream career is not straight, but keep at it."

—Samantha, GeoGirls, 2023



PROGRAMS SPOTLIGHT

GEOGIRLS

In August 2023, 23 enthusiastic teenage girls and 15 dedicated female geoscientists and educators converged at Mount St. Helens for the GeoGirls camp.

Over the course of five days, initial nerves gave way to a strong, supportive community, as they explored volcanic landscapes, conducted hands-on research, and bonded over campfire stories and songs.



Thanks to our generous donors and sponsors, GeoGirls continues to be a free-of-charge, unforgettable experience.

OUTDOOR SCHOOL

Mount St. Helens welcomed over 1800 students from the region in 2023, offering unforgettable outdoor learning adventures.

Many of these students had never seen the volcano before, and their visit was filled with discovery and exploration.

They observed wildlife, studied the terrain, and engaged in hands-on learning about ecological and geological processes.



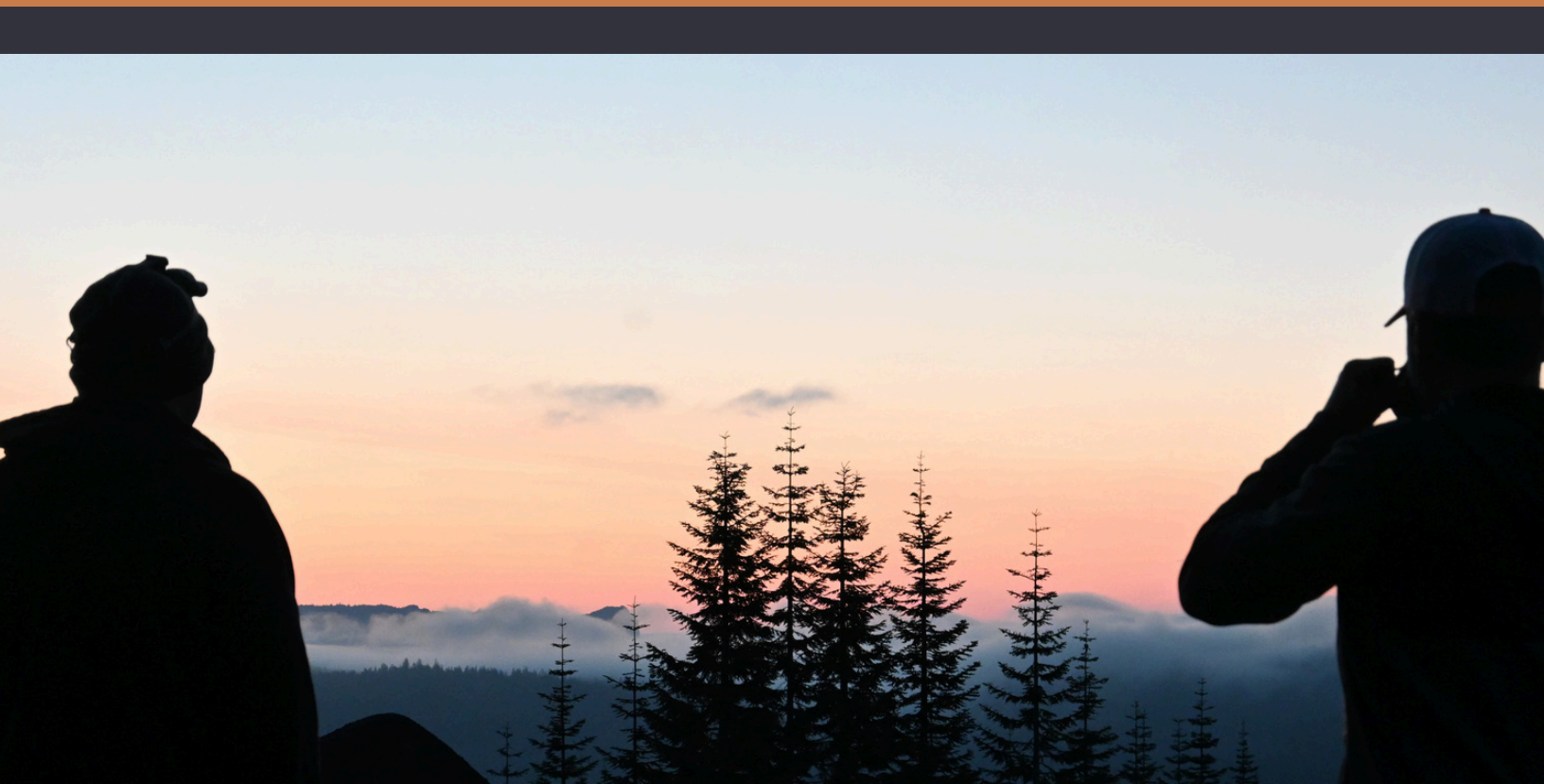
Through teamwork and reflection, they connected deeply with the environment. A heartfelt thank you to our supporters for enabling these transformative experiences.

"I intend to be outside more and relax in nature. I learned nature brings me peace and makes me feel happy. I'm also going to be more considerate about plants and animals." -Vancouver Upward Bound student, September 2024

“

"I love helping people to make good choices on their trails to keep them safe and for them to have a memorable experience."

—Vickie, MSHI Volunteer





VOLUNTEERS TO THE RESCUE

In 2023, volunteers helped out in a myriad of ways, from Volcano Ambassadors sharing the story of the volcano with visitors from around the world, to Mountain Stewards keeping hikers safe on trail, and much more. Last year, 330 individual volunteers donated over 12,400 hours of service, hiked over 6,600 miles and engaged with over 72,000 visitors. Thank you to each and every volunteer for your dedication and support!

One iconic volunteer effort stood out among the rest. When a landslide destroyed a section of State Route 504 on May 14, the day before Johnston Ridge Observatory was due to open for the season, volunteers were ready to help at a moment's notice. Just 9 days after the landslide, a crew of 15 volunteers hiked the 5 steep miles up to Johnston Ridge along with US Forest Service staff, filled their packs with as much gear and equipment as they could carry, and hauled it back down to the Science and Learning Center. These volunteers' hard work provided essential supplies to allow the USFS to quickly begin operating the Science and Learning Center as a public visitor center again, welcoming guests back to Mount St. Helens even as the landslide debris was still settling. This extraordinary effort exemplified the spirit of service and partnership that keeps the Mount St. Helens Institute and the Mount St. Helens National Volcanic Monument running strong, even in the face of change.

GROWING WITH OUR PARTNERS

We are thrilled to share some inspiring updates about our ongoing collaborations and program expansions, specifically our enriching partnerships with the Cowlitz Indian Tribe and the Mount St. Helens Institute.

Over the past three years, our joint initiative with the Cowlitz Indian Tribe has flourished through our relationship with the Cowlitz Indian Tribe Youth Garden Project. In 2022 we began a series of recurring seasonal foraging events, hosted by staff at the Mount St. Helens Science & Learning Center. These events are hands-on, community based opportunities for youth, elders and community members of both organizations to come together to practice sharing knowledge, foraging and celebrating the seasonal change. These events include harvesting huckleberries and making berry syrup, infusing honey with medicine herbs and flowers and foraging for mushrooms, and more!

Furthermore, Mount St. Helens Institute staff put their hands to work in the Cowlitz Garden in Toledo in work parties each year. The garden supports us by providing a place we can compost food from our Volcano Outdoor School overnight programs. We are so grateful for this collaboration and look forward to deepening our relationship!



LOOKING AHEAD

2023 brought exciting progress to the expansion of our operations at Coldwater.

We divided the entire project into three initial phases:

1. Expansion of outdoor school, including student accommodations and new staff housing
2. Construction of a new public campground, the first publicly accessible overnight accommodations since the creation of the Mount St. Helens National Volcanic Monument in 1982
3. A complete remodel of the Science and Learning Center, bringing the building into the 21st century and creating a multipurpose building better suited for its current purposes

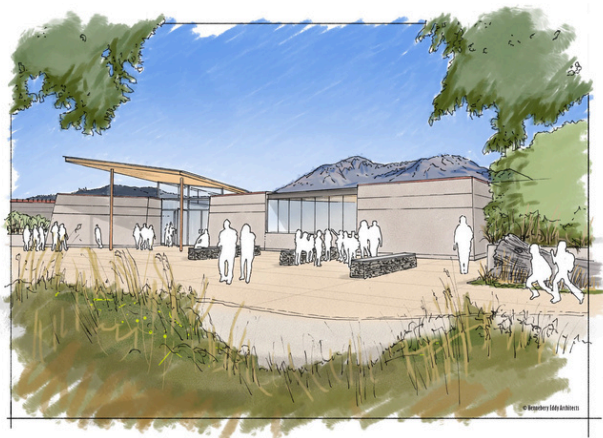


Working with Hennebery Eddy Architects, we completed concept designs for Phases 1 and 2, the expansion of outdoor school and a public campground. These concept designs are guiding the next stage of design as we work with the Forest Service to drill down into the details.



The new student accommodations will sleep up to 120 overnight participants, quadrupling the number of overnight students we serve. The campground will have a mix of RV pull through, RV back-in, and walk-in tent camping sites, catering to a wide variety of outdoor enthusiasts.

Design continues in 2024, and construction could begin as early as 2025 depending on funding.



FINANCIALS

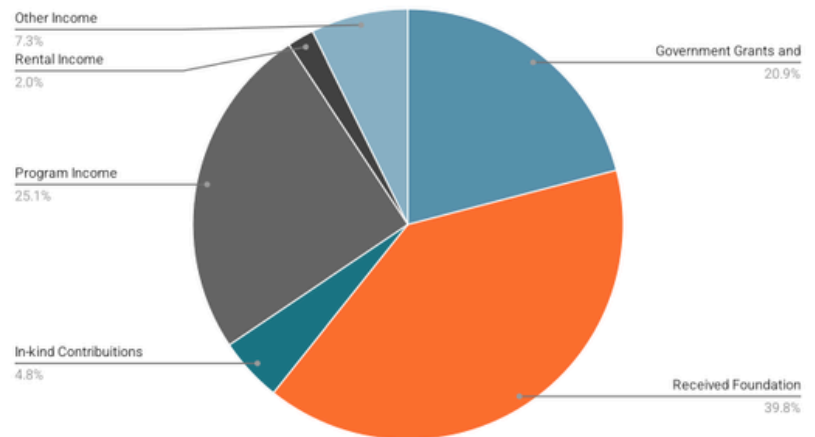
STATEMENT OF FINANCIAL POSITION

Assets	
Cash & Cash Equivalents	\$305,137
Other Assets	\$708,687
Fixed Assets	\$78,826
	\$1,092,650
Liabilities	
Accounts Payable	\$57,624
Accrued Expenses	\$67,908
Deferred Revenue & Other	\$79,778
	\$205,310
Net Assets	
Unrestricted Funds	\$17,164
Donor Restricted Funds	\$870,176
	\$887,340
Total Liabilities & Net Assets	\$1,092,650

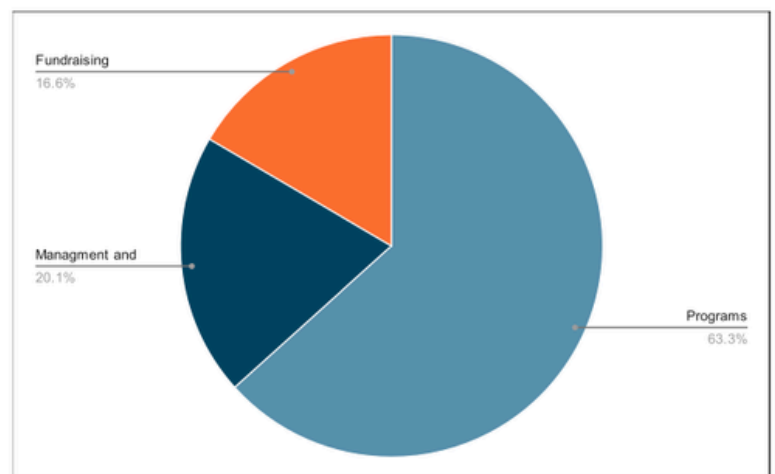
STATEMENT OF ACTIVITIES

Revenue	
Contributions	\$194,330
Government Grants and Contracts	\$283,215
Foundation Grants*	
Received	\$537,973
Pledged	\$662,000
In-kind Contributions	\$65,314
Program Income	\$339,750
Rental Income	\$26,859
Other Income	\$99,021
	\$2,208,462
Expenses	
Programs	\$868,617
Management and General	\$276,066
Fundraising	\$227,114
	\$1,371,797
Change in Net Assets**	\$836,665

2023 SUPPORT AND REVENUE RECEIVED



2023 EXPENSES



*Chart does not include pledged revenue of \$662,000, payable in 2024 and beyond.

**Change in net assets excluding pledged revenue is \$174,665.



MOUNT ST. HELENS
INSTITUTE

www.mshinstitute.org
info@mshinstitute.org
(360) 449-7883

Administration Office

42218 NE Yale Bridge Rd
Amboy WA 98601

Science and Learning Center at Coldwater

21000 Spirit Lake Hwy
Toutle WA 98649

